



PREcision health in Complex Immune-mediated inflammatory diseaSEs

HOSPITAL AND UNIVERSITY FEDERATION PRECISE
PRECISION HEALTH IN COMPLEX IMMUNE-MEDIATED
INFLAMMATORY DISEASES

Project leader site : Lille
Project leader : Prof. David LAUNAY

Partner centers : Amiens, Caen, Rouen
Associated centers: Valenciennes, Dunkerque



Contact :



fhu.precise@gmail.com



Twitter : @FhuPrecise



PREcision health in Complex Immune-mediated inflammatory diseaSEs

UNIVERSITY AND HOSPITAL FEDERATION



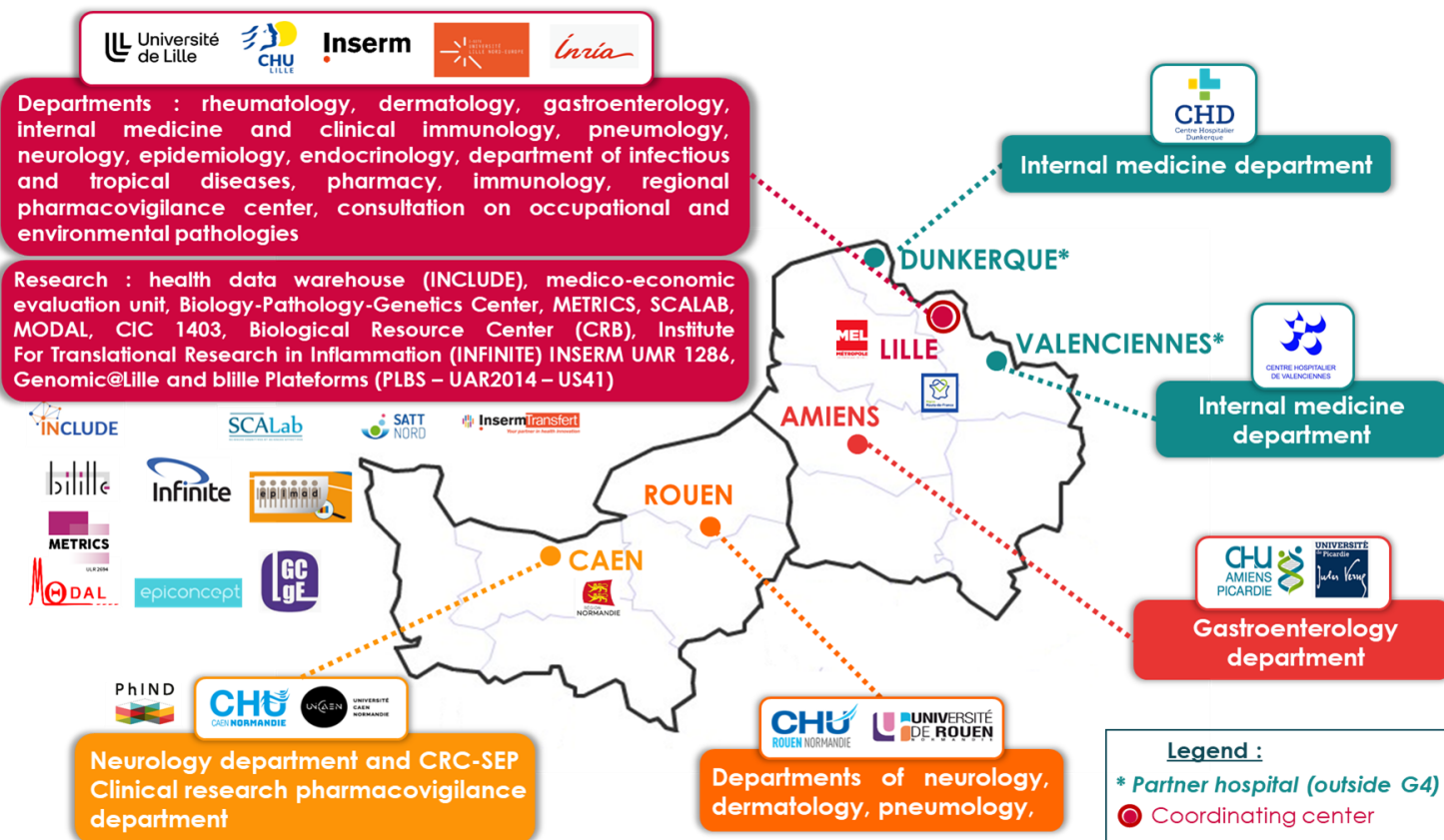
Topic

The « PRECISE » Hospital and University Federation is dedicated to **PRE**cision health in **CO**mplex Immune-mediated inflammatory disea**SES**.

Objective

Structuring care, research and teaching in complex chronic immune-mediated inflammatory diseases i.e. inflammatory diseases characterized by a resistance to treatment and/or complications related to the disease itself or its treatment.

FHU MEMBERS & NETWORK



FHU ORGANISATION



« With a strong support from our institutions: Universities, Hospitals and INSERM »

OUR GOALS

- Implementing a common interregional platform with clinico-biological health data from patients with chronic immune-mediated inflammatory diseases.**
- Establishing homogeneous groups of patients or endotypes** in an integrative multi-clustering approach ("virtual patient").
- Transversal, multidisciplinary research projects** including the impact of psycho-socio-economic factors on the evolution and experience of patients and the identification of pathophysiological mechanisms of response and resistance to treatment as well as of complications.
- Optimizing the management of patients with complex inflammatory disease** by:
 - Favoring the inclusion in clinical trials
 - Improving the management of complications and adverse events;
 - Developing a regional and interregional network for the management of inflammatory diseases (by hosting a multidisciplinary team (MDT) meeting).
- Education, teaching and training on chronic immune-mediated inflammatory diseases:**
 - For healthcare professionals: doctors, medical students, nurses, etc;
 - For patients and stakeholders: transverse Patient Therapeutic Education (PTE) kit, development of e-PTE, information days.

FHU PROJECTS : Why, for whom ?

Following a call for projects launched by the G4 health cooperation group including the university hospitals of Amiens, Caen, Lille and Rouen, with the support of the universities and Inserm, 8 university hospital federations have been accredited for five years from the beginning of 2021. These FHUs aim to "strengthen hospital-university relations through a research, care and teaching project".